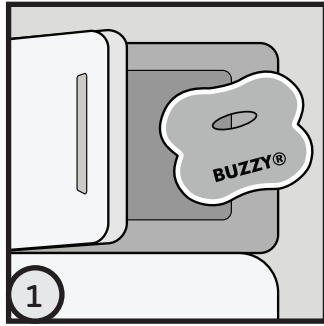


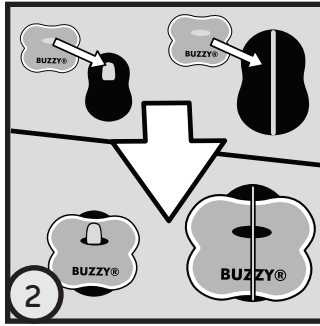
Directions For Use:



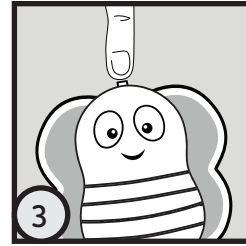
Place wings in freezer.

(Do not freeze vibration unit). Leave in until frozen solid (~30-60 minutes). Remove wings from freezer just prior to use. Wings stay frozen for ~10 minutes at room temp.

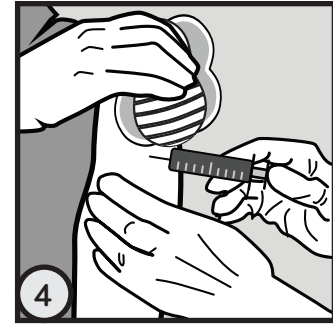
Note: To transport, place between 2 commercial cold packs (sold separately) in an insulated environment to maintain frozen temperature.



Attach wings to back of Buzzy®.



Flip switch or press button firmly to activate.



Buzzy® controls pain on contact.

Place directly on injury or "between the brain and the pain" for procedures.

For Injections:

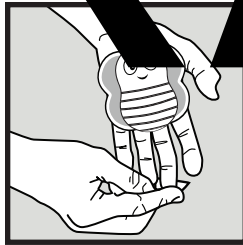
Place Buzzy® directly on the injection site for 30-120 seconds. Leave on longer for larger volumes or more painful injections. Move 2-3 cm proximal during injection and press in place.

Why Frozen?
Our unique formula freezes solid to transmit vibration; commercial gels absorb the specific vibration frequency needed for pain. Ice provides up to 60% of the numbing, and an intense cold causes the brain to inhibit pain every 100 ms.

DRAFT



TIP: Place Buzzy®'s bigger rounded end as close as possible to the site of the procedure, with Buzzy®'s switch end furthest away. During the injection, move Buzzy® 2-3 cm toward the spine along nerve paths (dermatomes) as shown.

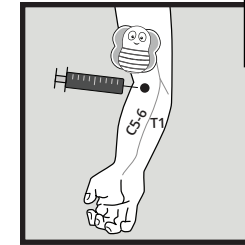


For finger splinter or splinter removal:

Press Buzzy® onto the palm with the bottom end toward the finger. Leave in place throughout cleaning and during the procedure.

For burning or itching:

For insect bites or medications that cause burning or itching, put Buzzy® directly on the site. Rub or press in place until the area feels better.

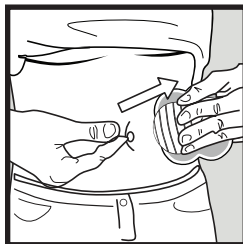


For IVs or phlebotomy:

Do not put directly on the site of access.

Activate, then hold or tuck Buzzy® under the tourniquet 3-5 cm above (proximal to) the access site. Clean site and access without delay. Optional: Pass tourniquet through the slot of Buzzy® XL to secure Buzzy® to arm.

For additional placement information, please visit: bzy.fyi



For injections in the stomach:

Place the injection on a horizontal line between the belly button and Buzzy®.

For children:
Let children hold Buzzy® in advance for familiarity, and let them choose whether or not to use the ice pack. For vaccinating children sitting up, a parent can put an arm around the child's shoulders and hold Buzzy® for them.

Why Does Placement Matter?
Vibration and cold are transmitted together to the same place in the spine as pain. To block pain, Buzzy® needs to be on the same nerve paths as the source of the pain.